

 **STONEX**

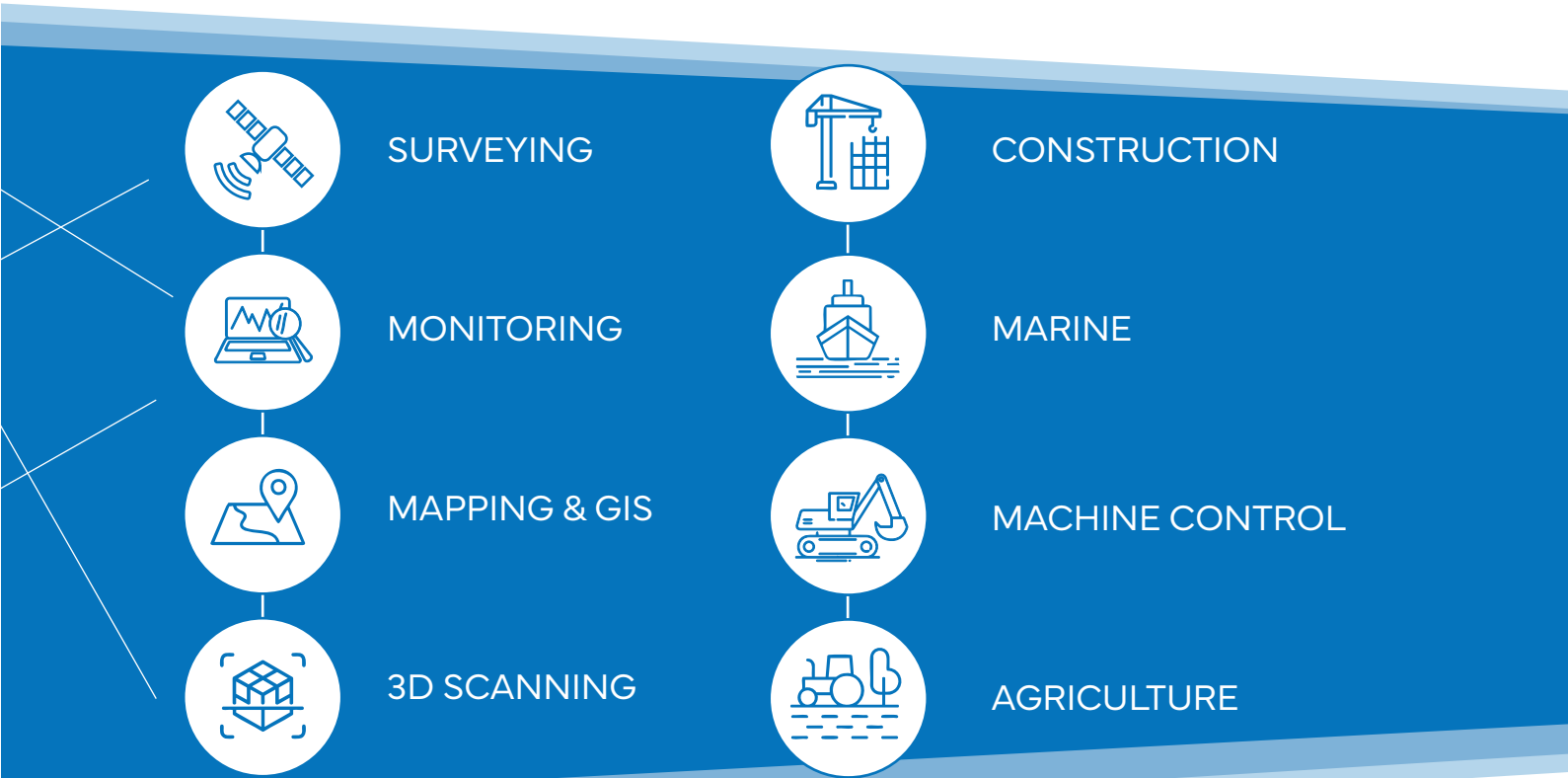
PRODUCT CATALOG 2026

[stonex.it](https://stonex.it)

# ABOUT US

**Stonex and Stonex USA work together to provide comprehensive support, distribution, and service worldwide. Stonex, headquartered in Italy, manages global operations and coordinates a network of over 200 qualified distributors, while Stonex USA, based in Concord, provides dedicated assistance for the North American market.**

The combined Stonex offering delivers significant advantages to end users: products integrate advanced technologies with practical, ergonomic design to simplify daily work, and a skilled team of consultants provides thorough pre-sales and after-sales support. By integrating multiple positioning technologies and software, Stonex provides a broad range of solutions capable of meeting the needs of diverse industrial and application sectors.



# SUPPORT AND SERVICE STONEX

**Stonex provides a qualified Support & Service structure dedicated to its dealer network.**

Through this division, Stonex offers dealers training, assistance and technical support via different channels, including webinars and live sessions aimed at deepening product knowledge and usage.

Thanks to this model, our network of authorized dealers is able to deliver an excellent level of consultation and customer service, ensuring that end users receive the support they need throughout the entire lifecycle of the product.



# SLAM

## LASER SCANNERS

Stonex offers a wide range of SLAM products, capable of generating high-precision point cloud data. All the devices are equipped with LiDAR, a camera for texture information along with an inertial navigation module.

The integrated structure includes storage system and built-in replaceable batteries. Mapping results are visible in real time from the GOapp. GOpost can perform post-processing of collected data, generate high precision colored point clouds, produce panoramic images and integrate GNSS data. The uniqueness of Stonex SLAMs is in the stability and strength of the algorithm, which is able to reconstruct complex scenarios that are not trivial for this type of technology.



### X-WHIZZ MODE

X70<sup>GO</sup>, X120<sup>GO</sup> and X200<sup>GO</sup> models merge mobile and stationary surveying. X-WHIZZ is an advantageous SLAM solution that allows you to survey large areas in a short time and combine a stationary mode to scan with higher resolution. Mount the device on a monopod and stand still in key areas for a few seconds. It is the perfect trade-off for those who need speed and detail in a mobile survey.



#### RAPIDITY AND REDUCED WORKLOAD

No more multiple scan stations, just move around the scene to collect the entire 3D point cloud, without time-consuming cloud-to-cloud alignment.



#### REAL TIME PREVIEW

Track real-time LiDAR acquisition with colour-mapped coverage indicators via the dedicated Android app directly in the field.



#### AUTOMATIC CONTROL POINT MEASUREMENT

When capturing data, the device can also collect reference points, which can be matched with known control points to georeference or compensate the scans, or to check the final quality of your survey.



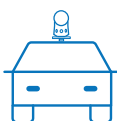
#### STRONG ALGORITHM, RELIABLE DELIVERABLE

Data processing can be done in a few clicks, obtaining the best result for the situation, even processing batches of scans. In the case of special environments, the processing parameters can be edited to maximise the quality.



#### GEOTAG COLLECTION

Directly in the field you have the possibility to take pictures or add notes related to your position. Those information will be available and consultable inside the point cloud.



#### WIDE RANGE OF ACCESSORIES

Stonex SLAMs are equipped with a very interesting range of accessories, which facilitate its use in the field and cover different scenarios. Backpack, shoulders hook or vehicle mount platforms allow to cover long trajectory effortlessly.



## X200<sup>GO</sup> X+WHIZZ<sup>PRO</sup>

**The rotating head has 32-channel sensor with 300 meters range and 3 returns.**

Embedded GNSS board and two 12 Mpx cameras, which provide texture information and panoramic images. Colour information is available in real-time and mapped results are generated immediately inside the scanner: choose if you want to improve their accuracy postprocessing with GOpst software.

The high precision IMU makes the product versatile, even for use on UAV drone.

## X120<sup>GO</sup> X+WHIZZ<sup>PRO</sup>

**The new X120GO features a rotating LiDAR head with a 16- or 32-channel sensor.**

Aesthetically similar to the X200<sup>GO</sup> model, with which it shares much of the same hardware, it stands out for its range of up to 120 meters, 360° x 290° coverage, and the ability to detect two returns.



## X70<sup>GO</sup> X+WHIZZ<sup>PRO</sup>

**It integrates a 360° rotating head with 70-meters range LiDAR, a 12 MPx visible-light camera which provides texture information, and a visual camera that guarantees stronger real time preview with GOapp.**

Mapping results are generated immediately inside the scanner, right after scanning: choose if you want to colour them and improve their accuracy, postprocessing with GOpst software.



## X40<sup>GO</sup>

**Equipped with the same sensor as the X70<sup>GO</sup>, the lidar does not have a rotating head but its orientation is designed to maximise coverage.** The 12 Mpx camera has a wide FOV for point cloud colouring. An affordable and simple product, ideal for interior surveys and layout generation.

# XVS

## NEW GENERATION PHOTOGRAMMETRY

The system uses a technology based on the integration of high-resolution images, an inertial system, and a complex algorithm. By capturing a scene with XVS, it is possible to generate a 3D model through photogrammetric techniques. The hundreds of images collected by the instrument are automatically selected by an algorithm to effortlessly produce the best possible 3D model.

Thanks to the Visual SLAM system (Simultaneous Localization and Mapping), the camera's position and orientation relative to the surrounding environment are determined while simultaneously mapping the environment itself.

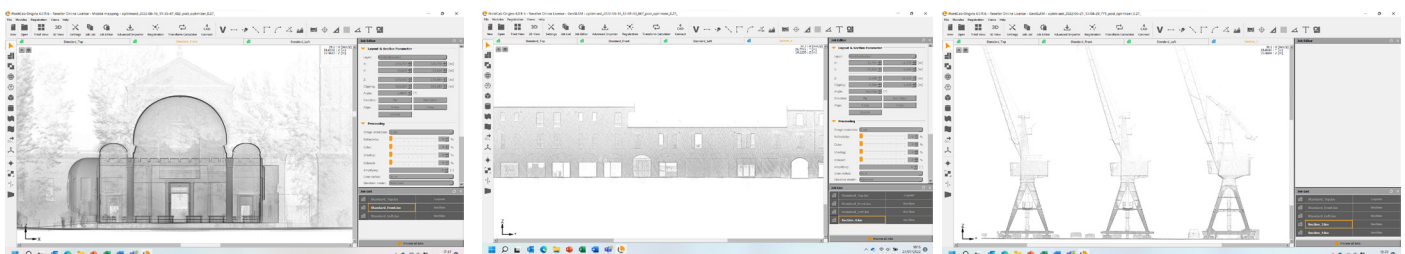


## DATA PROCESSING SOFTWARE

# PointCab

Thanks to the collaboration between Stonex and PointCab, you can manage your point clouds with it.

PointCab Origins is your Swiss army knife when it comes to the evaluation of point cloud data – working with all laser scanners and compatible with all CAD and BIM systems.

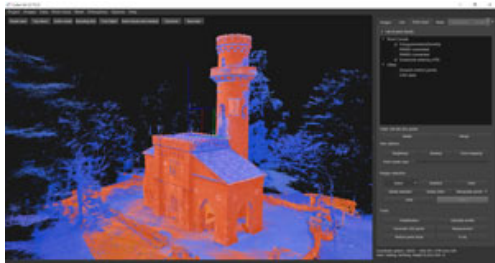
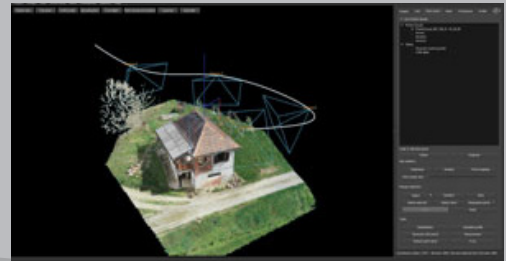




Cube-3d is your all-in-one solution for 3D data management. It combines photogrammetry and scanner modules to process images, videos, and point clouds with exceptional accuracy. Compatible with Cube-a surveys and third-party models, it lets you draw, merge, and enhance data in one platform. Enjoy powerful CAD tools and features like automatic classification, orthophotos, cross sections, volume calculations, and more. Flexible licensing options (perpetual or subscription) adapt to every professional need.

### PHOTOGRAMMETRY MODULE

Process all your imagery in one project - whether from handheld cameras, UAVs, or multi-camera setups - and create high-definition 3D models with exceptional accuracy. Generate a fully geo-referenced, spatially oriented overview of your site in minutes. Cube-3d automatically detects GCPs and detail points during orientation, allowing quick verification. With Stonex targets, centering is immediate, saving even more time. Coded targets are also supported for fully automated workflows. And if you're using RTK drones, achieving centimeter-level accuracy is effortless - even without GCPs.



### SCANNER MODULE

Import clouds from Lidar, Laser Scanners, and without limitation from any tool capable of generating them. Full support for Stonex Scanners and a wide range of import formats. Register point clouds in cube-3d and take advantage of all the excellent tools it provides.

### CLOUD VIEWER

Upload your results to Cube-3D Cloud and access your projects anytime, anywhere. View point clouds, meshes, orthophotos, and CAD data directly from any device. Simply share a link - your clients can explore detailed views and perform in-depth analyses without installing specialized software. Empower them with tools for precise measurements, annotations, and even comparisons across different project phases.

# GNSS RECEIVERS

WITH CAMERA



## S599

COMPACT GNSS SYSTEM

The S599 GNSS receiver is designed for GIS professionals who require high precision in a compact and lightweight device. **Weighing just 385 grams** and featuring a reduced form factor, it is ideal for long field surveying sessions. Rugged and IP68-rated, it withstands harsh environmental conditions. **Equipped with a built-in camera for AR stakeout**, the S599 shows real-time navigation and distance to target points.



## S880

VISUAL STAKEOUT



The Stonex S880 is a compact and versatile GNSS receiver designed for surveying, mapping, and navigation. **With a bottom stakeout camera for real-time visual guidance**, the S880 simplifies point staking in the field. It integrates a 2W radio, 20 Hz positioning, IMU, and 4G modem for precise performance and stable connectivity.

**Weighing only 730g and rated IP68**, it withstands harsh environments. With 8 GB of memory and up to 10 hours of battery life, the S880 offers reliable portability for professional field operations.



## S950

DUAL CAMERA AND LASER DISTANCE METER

The S950 receiver delivers advanced performance with 1408 channels and features an integrated laser distance meter. The range extends up to 30 meters, seamlessly combining distance measurements with GNSS data for real-time, georeferenced results. It includes 4G GSM connectivity for data transfer, an integrated 2 W radio for long-range communication, and IMU technology to maintain accuracy even in weak signal conditions. The dual-camera system boosts efficiency and precision by enabling simultaneous stakeout from two perspectives.



# GNSS RECEIVERS

WITH PHOTOGRAMMETRY



## S999

DUAL CAMERA

S999, equipped with 1408 channels, guarantees precise and reliable positioning by supporting all GNSS signals, including GPS, GLONASS, Galileo, QZSS, IRNSS, and BeiDou.

It features an integrated 4G modem and a 1-Watt UHF radio operating in the 410-470 MHz and 902.4-928 MHz frequency ranges, ensuring constant connectivity and an extended working range.

The advanced IMU technology enables tilted measurements of up to 60° with rapid initialization, enhancing field productivity by as much as 40%.

The S999 receiver is also equipped with two cameras: one for stakeout and one for photogrammetric applications, expanding the system's usage possibilities.



## S1000

PHOTOGRAMMETRY & LASER DISTANCE METER

The S1000 is the first receiver to incorporate the new GNSS board, delivering full multi-constellation and multi-frequency tracking capabilities.

This ensures superior satellite signal acquisition and tracking performance, even in the most challenging environments.

It is equipped with two cameras designed for intuitive and immediate AR stakeout. In addition, the rear camera is optimized for high-quality photogrammetry and allows the acquisition of detailed images for measuring coordinates on photos.

Completing its powerful feature set is an integrated laser distance meter, providing accurate measurements in hard-to-reach or obstructed locations where traditional tools may fall short. The receiver also includes an upgraded long-range LoRa radio for stable, extended communication, and features two hot-swappable batteries to maximize uninterrupted operational time.



# TOTAL STATIONS

HIGH TECHNOLOGY AND QUALITY

## R20

ACCURATE AND EFFICIENT

The R20 range is composed of 3 versions, the R20 1000 m model with 2" angular accuracy, the R20 1000 m model with 1" angular accuracy and the R20 600 m model with 2" angular accuracy.

The three models offer optimum performance up to 5000 m with prism and 1000 m or 600 m reflectorless.

The entire R20 range is equipped with a high-performance, illuminated reticle telescope that provides the best quality of observation, whatever the environmental conditions. The programs on board of these models of total stations make them suitable for any work in construction, cadastral, mapping and staking, through a user-friendly interface. Thanks to the presence of Bluetooth connection, it is possible to connect an external controller, giving the possibility to use a customized field software.



## R40

ANDROID TOTAL STATION

R40 is a mechanical total station featuring Android 11 Operating System and equipped with Cube-a software on board. Designed for accuracy and efficiency, it is available in two versions with 1"/2" angular accuracy, and features accuracy on distance measurements of 2mm + 2ppm in prism mode and 3mm + 2ppm without prism.

The possibility to measure up to 5000m with prism and 1000m in reflectorless mode makes it a versatile instrument for various surveying tasks. Equipped with 4GB RAM and 64GB ROM, it supports efficient data processing and storage. With built-in GSM connectivity, the R40 allows the user to stay connected in the field, sending and receiving data or accessing remote support. R40 is characterized by Cube-a onboard application, that can integrate and manage GNSS survey data and total station information for streamlined data management. Bluetooth supports easy data transfer between the station and other devices, while dual 5.5-inch TFT LCD screens provide clear visibility in any lighting. The intuitive 13-key keypad ensures quick access to essential functions, making fieldwork easier than ever.



# TOTAL STATIONS

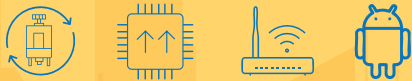
ROBOTIC SOLUTIONS

## R120

### ANDROID ROBOTIC TOTAL STATION

R120 is a robotic Android total station that provides exceptional precision with an angular accuracy of 1" (2" & 5" available) and an electronic distance measurement (EDM) accuracy of 1mm + 1ppm. It operates effectively up to 1000m (800m for 2" & 5" version) in reflectorless mode and features a rotation speed of 60° per second.

This instrument combines the capabilities of a robotic station with excellent cost-effectiveness. The R120 is designed with a 5.5-inch color touch screen and runs on the Android operating system, making it user-friendly and similar in interface to a smartphone, which enhances data exchange capabilities. The onboard Cube-a software allows operators to seamlessly integrate GNSS tasks with surveys performed using the total station. Communication and data transfer between the station and the controller are facilitated via a Bluetooth connection. Additionally, the R120 has an integrated modem, enabling the operator to connect to the internet to send and receive topographic data.



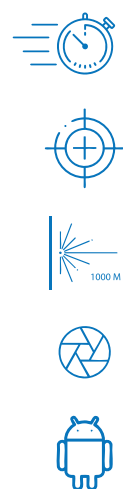
## R180

### ANDROID ROBOTIC TOTAL STATION

The R180 is a highly accurate and fast Android robotic station. It features a rotation speed of 180°/sec and an EDM accuracy of 1mm + 1ppm, with a range of up to 1000m without a prism. The R180 is available in three versions, 0.5", 1" and 2" second. For all models, the quietness and smoothness in prism searches and rotations are among the most observed and appreciated features.

Equipped with the Android operating system, the R180 comes with Cube-a as onboard software. Android enables easy and intuitive touch-screen navigation, allowing users to interact with the device in a familiar way.

The Cube-a onboard software includes all the classic functions of the program, as well as the integration of jobs done with GNSS receivers and surveys done with the total station. This allows operators to achieve complex and professional work in a short time and with high accuracy. Additionally, the R180 has a camera and a light guide to further facilitate field work.



# TABLETS & CONTROLLERS

## S80

ANDROID TABLET 8"

The S80 is a rugged Android tablet - precise, durable, and well-equipped - ideal for professionals who need a practical and lightweight device.

Featuring Android 13, it takes advantage of the software innovations, while its high-brightness 800-nit display ensures excellent visibility in outdoor environments. Additionally, with the optional Long-Range Bluetooth Module, the S80 can connect to Stonex Robotic Total Stations up to 650 meters, providing stable and reliable communication even on the largest job sites.

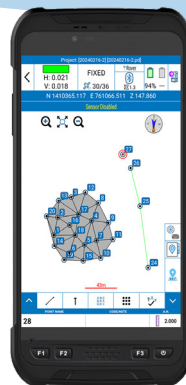


## S60

ANDROID TABLET 6"

The rugged S60 tablet is a next-generation solution designed for professionals working in challenging environments.

It combines ruggedness, power, and advanced connectivity for reliable performance in any working environment. Featuring 5G connectivity, Android 14, and a high-visibility 6" display, it offers up to 15 hours of battery life. It supports Bluetooth Low Energy and is optimized for Cube-a software.



## S55

ANDROID CONTROLLER 5.5"

Stonex S55 is a handy and light device, it is perfect in situations where you need to regularly use the alphanumeric keyboard.

Its low weight makes it perfect for applications without the use of supports or with light and minimal supports.



# GIS RECEIVERS

## S590

FROM GIS TO TOPOGRAPHY

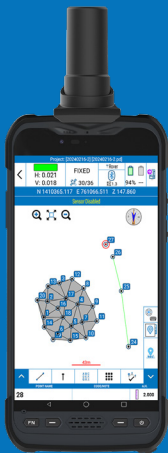
The S590 is a versatile GNSS receiver equipped with a multi-constellation system supporting GPS, GLONASS, BeiDou, Galileo, QZSS, IRNSS, and available PPP correction services. It delivers centimeter-level accuracy through sophisticated technology that records raw data for post-processing, ensuring precision in demanding applications. The S590 can also be used as a base station for drones, significantly enhancing the accuracy and reliability of aerial operations. Thanks to its compact size and design, the S590 can be used both handheld and mounted on a pole.



## S60G

GNSS RTK TABLET

The S60G is a rugged handheld device designed for professionals working in challenging environments. Combining durability, power, and seamless connectivity, it delivers reliable performance anywhere. Thanks to its integrated antenna, data can be collected while the system is in motion.



## S55G

GNSS RTK CONTROLLER

The S55G is a GNSS RTK controller and receiver equipped with a triple-frequency GNSS board with 1408 channels, supporting multiple satellite constellations: GPS, GLONASS, BeiDou, Galileo, QZSS, and IRNSS.

It runs on Android 12, offering a simple and intuitive interface. The device features an integrated antenna that allows for data collection while in motion. For higher accuracy, it can also be mounted on a pole paired with the SA85 antenna.



## S80G

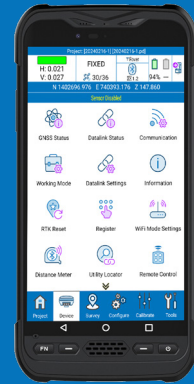
GNSS RTK TABLET

The S80G is a GNSS system offering a wide range of features and capabilities for efficient field data and photo collection. It is a multi-constellation system, meaning it can use signals from multiple satellite networks, including GPS, GLONASS, Galileo, and BeiDou. Like the S55G, it features an integrated antenna for data collection on the move, but it can also be used with an external GNSS antenna.



# FIELD SOFTWARE

Stonex Cube-a is an advanced, all-in-one software solution specifically designed for surveying, geospatial, and construction professionals. Built for the Android platform and optimized for 64-bit architecture, Cube-a delivers a smooth, user-friendly experience that simplifies data collection, processing, and management, empowering surveyors to boost both productivity and accuracy in the field. Seamlessly integrating with Stonex hardware, including GNSS receivers and total stations, as well as third-party devices, Cube-a offers a modular approach that allows users to activate essential features such as GNSS data management, robotic and mechanical total station support, GIS functionality, and 3D modeling capabilities.



## MAIN MODULES

### GPS

Cube-a is compatible with all Stonex GNSS receivers.

It supports **Rover, Rover Stop & Go, Base, and Static modes**. Various screens provide useful information about the GNSS receiver status, including position, sky plot, SNR levels, and base location.

### TOTAL STATION

Cube-a is designed to **support mixed surveys**.

A survey conducted with Cube-a simultaneously handles GNSS points and traditional total station measurements. **Total stations can be configured to occupy previously collected GNSS points** or unknown positions calculated using the Free Stationing feature.



## ADD-ON MODULES

### GIS

**GIS functionalities are fully integrated into the standard GNSS survey workflow.** Thanks to Cube-a's ability to collect not only individual points but also automatically draw vectors connecting collected points, GIS surveying becomes fast and easy. The GIS data entry is automated, following the acquisition of each point or vector.

### 3D & ROAD

The 3D module adds commands for **real-time surface modeling**. Base points and constraints are selected by layering. Constraints are optional and include a perimeter, break lines, and voids (closed areas not to be triangulated).

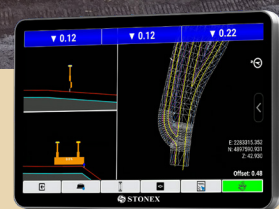
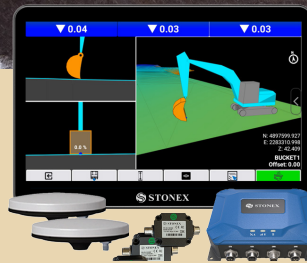
The model display mode can be selected among wireframe, solid triangles with sides, shaded triangles with sides, or external perimeter with triangulated points. Volume calculations can be easily defined. This module also includes the **Roads function, which allows staking out road centerlines and cross-sections**.

# MACHINE CONTROL SOLUTIONS



In today's construction and earthmoving industries, machine control solutions are revolutionizing the way operators work by improving efficiency, precision, and cost savings. Our solutions are designed specifically for excavators, dozers and wheel loaders. These advanced systems integrate cutting-edge technology to **optimize grading, digging, drilling, piling and material handling tasks.**

Our systems can be 1D, 2D or 3D, with real-time data displayed in the cab to assist operators in making precise movements.



## SUITE STX-MC

STX-MC software is fully developed and supported by our experienced Stonex development team in Milan, Italy.

The software represents the heart of all our machine control systems and it's created with a strong focus on the real needs of machine control users: **simplicity, reliability, and flexibility.**

## STX-CLOUD

STX-CLOUD is a web portal designed to facilitate the exchange of job data between the office and the job site. Job site data uploaded to the web portal can be assigned to one or more tablet devices—typically those installed in earth-moving machines—either individually or in bulk.

**A simple and intuitive user interface allows operators to preview DXF files before uploading them to the server.**



## STX-AG400

### AUTO STEERING AND MANUAL STEERING

Operators can choose between **Manual Guidance** (STX-AG400 Lite) and the **Auto-Steering** option (STX-AG400). The latter utilizes a high-torque electric steering motor to navigate pre-planned routes autonomously with total reliability.

- Streamlined tractor & implement calibration and configuration for peak efficiency ( $\pm 2.5$  cm accuracy)
- Integrated field management & precise boundary control
- Smart U-Turn technology with specialized guidance modes
- Adaptive performance for low and high-speed operations
- Full ISOBUS protocols supported for multiple implements. (UT, TC-SC, TC-GEO, TC-BAS & AUX).



ISOBUS



$\pm 2.5$  cm



FOLLOW US



**EUROPE HQ**

Viale dell'Industria 53, 20037 Paderno Dugnano (MI) – Italy



**USA HQ**

54 Regional Drive, Concord 03301 - NH - USA



+39 02 78619201 - [info@stonex.it](mailto:info@stonex.it)



+1 603-715-5771 - [sales@stonexamerica.com](mailto:sales@stonexamerica.com)



**[stonex.it](http://stonex.it)**



**[stonexamerica.com](http://stonexamerica.com)**

STONEX AUTHORIZED DEALER

Images: Stonex SRL  
April 2026-v2